

Partners of the Coatings Industry

The Ingtec - Pneumacon AG, Switzerland

Your partner in the field of

Technical Engineering, Plant Construction, Process Technology, Bulk Solids Technology, Fluid Technology, Environmental Technology, Electrical Control Systems.

Machines and plants for

Battery manufacturing
 Ceramic industry
 Chemical, cosmetic and pharmaceutical industry
 Communal and industrial sewage plants.
 Food and beverage industry
 Lacquer, dyeing and building protective industry
 Perlite processing installations.
 Stone and earth industry
 Water treatment and filtration (Drinking water station with pumps, Ingtec-Pneumacon Grey-Brown as water storage for plants).



Company Profile

We are a team of experts in the field of process and environmental technology with a high level of experience and technological know-how. We are committed to deliver high quality products/constructions and services for environmental-friendly process technique. Our core business is Technical Engineering, Process Technology and Plant Constructions. Ingtec-Pneumacon is the competent partner for consulting, concept development, process engineering, research and construction management. We deliver, assemble, install individual machine parts and supply complete installations as well. Our challenge is to provide a speedy and reliable solution to any specific customer demands.

Customer needs combined with ecological and economical aspects drive our business.

In addition we represent international companies as general agency.

Consulting - Planning - Delivery - Mounting - Service. Installations from one hand – that's our offer.



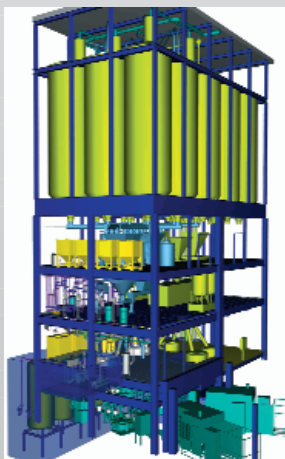
INGTEC-PNEUMACON AG
 CH-4313 Möhlin
www.ipswiss.ch

Tel +41 (0)61-816 11 11
 Fax +41 (0)61-816 11 12
 E-Mail: info@ipswiss.ch

IPSWISS Ingenieurtechnik, Verfahrenstechnik, Maschinen- und Anlagenbau

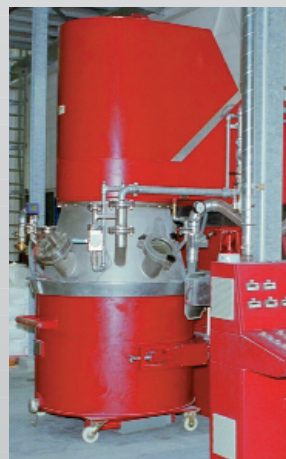
IPSWISS Misch-, Dispergier-, Dosier- und Abfüll-Technik
 Maschinen und Anlagenbau für die Baustoff-, Farben- und Lack-, Dicht- und Klebstoffherstellende Industrie.

IPSWISS mixing-, dispersing-, dosing- and filling systems.
 Machines and process lines for the building material-, paint- and vanish-, sealant- and adhesive industries.



3D-Turn key plant

Dissolver
 Collovelox
 Universalmischer
 Butterflymischer
 Planetenmischer
 Past – mix
 Vertikal-Kneiter
 Labormischer
 Konus- und Spezialmischer
 Dosier- und Abfüllanlagen
 Anlagenbau



Planetarymixer

Disperser
 Colloid mill
 Multi Purpose Mixer
 Butterflymixer
 Planetarymixer
 New Mixer Generation
 Vertical Kneading Machine
 Laboratory mixer
 Cone- and Special designed mixers
 Dosing and filling systems
 Turn key plant

www.ipswiss.ch